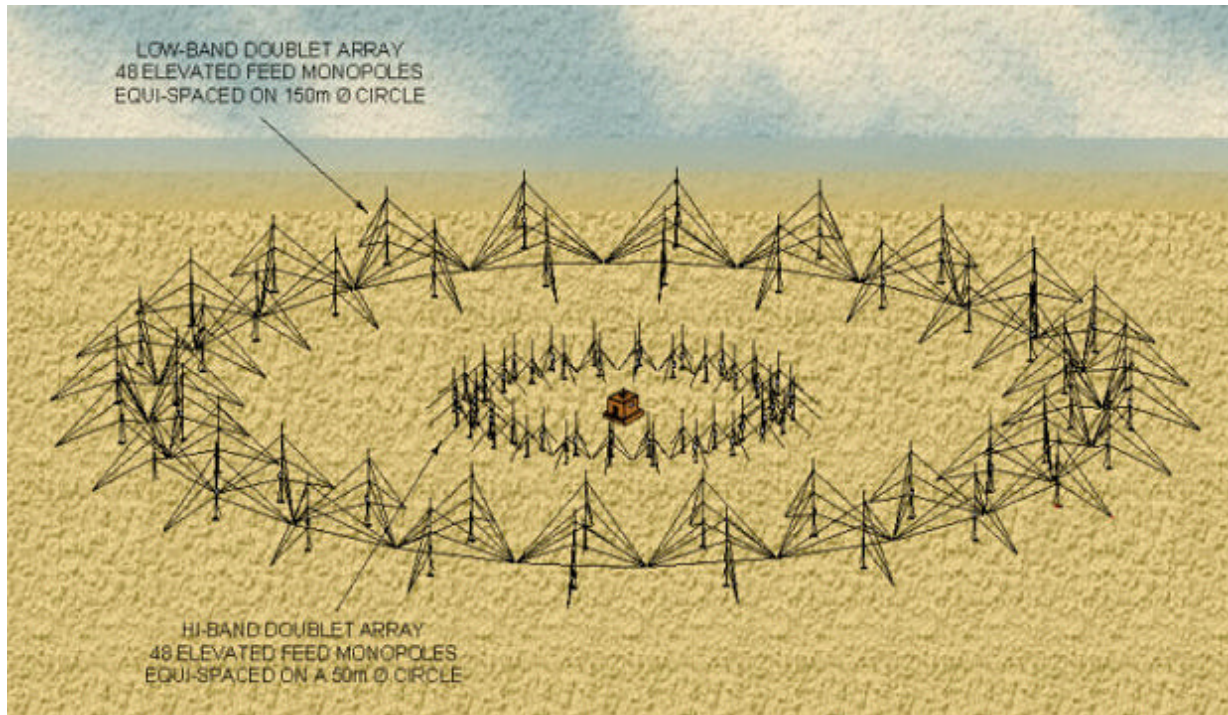


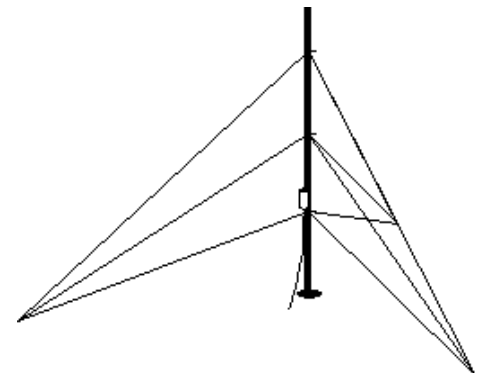


Arkonia Systems Limited

ARK1120 'PUSHER' CIRCULARLY DISPOSED ANTENNA ARRAY (CDA)

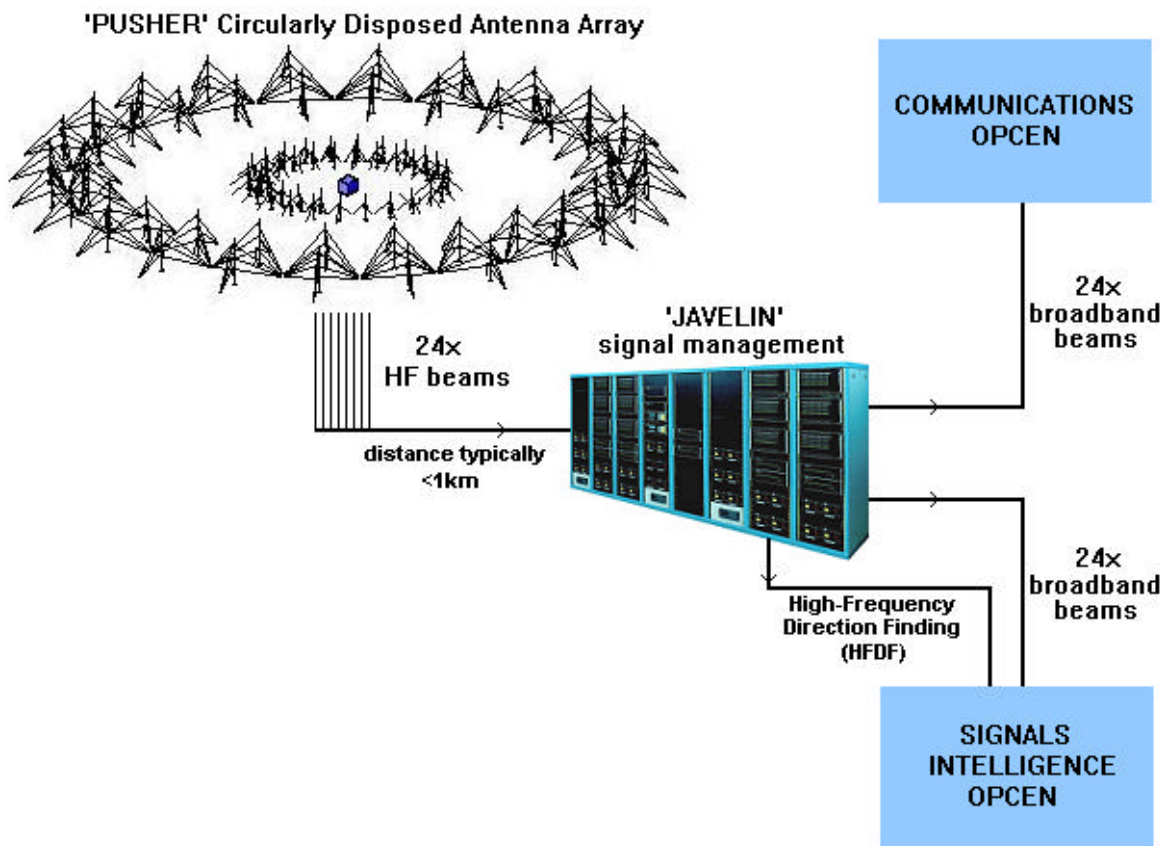


- ▲ Equivalent to 24 Rhombic Antennae Covering 360°
- ▲ Used by SIGINT Agencies for HF Signals Monitoring & Direction Finding
- ▲ Electronically Steered Beams for Best Signal
- ▲ Doublet Array with Enhanced Rejection of Unwanted Signals
- ▲ Improved Signal-to-Noise Ratio



'PUSHER' Circularly Disposed Antenna Array (CDA) 1-30MHz

Configuration providing independent services for
Signals Intelligence & communications applications



SYSTEM FEATURES:

- ▲ All 24 High-Gain, Broadband Beams are available simultaneously
- ▲ One Pusher System can provide simultaneous and independent service to 2+ separate Operation Centres
- ▲ Switching and Distribution System can service 200 – 300 operators or remotely located receivers
- ▲ Fast Scanning Capability for Efficient Intercept and Beam Selection
- ▲ Full Direction Finding Systems available : details on request

FOR FURTHER TECHNICAL INFORMATION REQUEST: PRODUCT SPECIFICATION



ARKONIA SYSTEMS LIMITED
SIGNAL HOUSE
35 WOOLMER WAY
BORDON, HAMPSHIRE
GU35 9QE, ENGLAND
T: +44 (0) 1420 488 646
F: +44 (0) 1420 477 845
E: commercial@arkonia.co.uk
Web: www.arkonia.co.uk

This publication is issued to provide outline information only and (unless specifically agreed to the contrary by the Company in writing) is not to be copied or to form part of any order or contract or to be regarded as a representation relating to the product or services concerned. Any applications of products shown in this publication are for illustration purposes only and do not give or imply any licences or rights to use the information for any purposes whatsoever. It is the responsibility of any person who wishes to use the application information to obtain a licence for such use. We reserve the right to alter without notice the specification, design or conditions of supply of any products or service.